

Mathematics KS4: Year 10 Sets 1 & 2



Congruence & Similarity

- Triangle
- Lengths
- Areas
- Volumes

Vectors

- Four operations on Vectors
- Vector proofs

Trigonometry 2

- SINE rule
- COSINE rule

Circle Geometry

- All the Circle Theorems

Revise Angles and Shapes

- Angle rules points, lines triangles, parallel lines
- Polygon angles
- Bearings

Revise Ratio and Proportion

- Split into parts
- Express as a fraction
- ratio problems with fractions

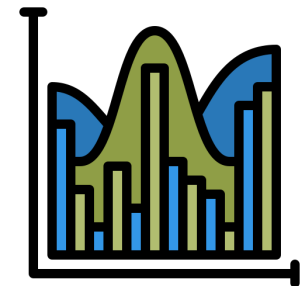
Direct & Indirect Proportion

- Form and interpret Equations

Scale Drawing & Accurate Drawing

- Drawings and 3D Shapes

SUMMER 3:2



Graphs 2

- Plot cubic, reciprocal
- Plot trigonometric
- Plot Equations of Circle

Quadratic Equations

- Solve algebraically
- Complete the square
- Use Quadratic Formula

SUMMER 3:1

Probability

- Frequency Trees
- Expected Frequencies
- Mutually Exclusive
- Tree Diagrams
- Venn Diagrams

Constructions and Loci

- Bisect a line, angle
- Perpendicular bisector

Revise Indices

- Laws of Indices
- Fractional Negative

Surds

- Simplify
- Expand brackets
- Rationalise

Revise Graphs 1

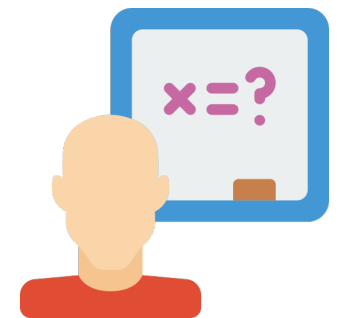
- Plot linear graphs
- $y = mx + c$

Inequalities & Regions

- On a number line
- show on a graph

Real Life Graphs

- Distance Time Graphs
- Speed Time Graphs



Revise Standard Form & Number

- LCM and HCF
- Convert to St form & Vice Versa
- St Form calculations

SPRING 2:2

Linear Equations & Inequalities

- Solve one step, two step
- Brackets

Volumes and Surface Area of Prism, Pyramids, Spheres, Cones.

SPRING 2:1

Revise - Area and Perimeter

- Triangles, Trapezia, Parallelogram
- Circles
- Circumference

Ratio and Proportion

- Express as a fraction, ratio problems with fractions

AUTUMN 1:2

Number 1

- BIDMAS
- Product of prime factors
- HCF, LCM
- Indices
- Rules of Indices

Simultaneous Equations

- Algebraically solve them
- Graphically solve them

Cumulative Frequency

- Boxplots
- Histograms

Scatter Graphs

- Draw and interpret
- Lines of Best Fit
- Estimate from graph

AUTUMN 1:1

Revision - Algebraic Manipulation

- Collect like terms
- Expand and factorise
- Expand double and triple brackets

Standard Form

- Change from ordinary numbers to st form and vice versa
- St Form Calculations

Revise Pythagoras and Trigonometry 1

- Sides in a Triangle
- Angles
- Sides

OUR LEARNING JOURNEY



Mathematics KS4: Year 10 Set 3/4



Rounding Estimating & Bounds

- Approximation to calculations
- Upper and Lower bounds
- Error Intervals
- Solve Problems

Collecting and Recording Data

- Sampling
- two way tables
- criticize questionnaire

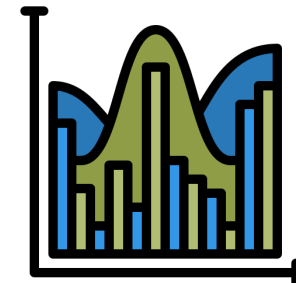
Revise Representing Data

- Cumulative Frequency
- Histograms
- Box Plots

Congruence & Similarity

- Triangle
- Lengths
- Areas
- Volumes

SUMMER
3:2



Simultaneous Equations

- Solve algebraically using a graph.

Revise Linear Equations & Inequalities

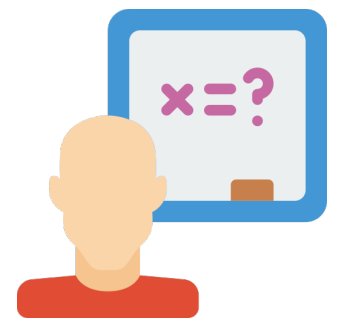
- Solve Equations

SUMMER
3:1

Accurate Drawing and Scale Drawing and 3D Shapes

Graphs 2

- Plot cubic, reciprocal
- Plot trigonometric
- Plot Equations of Circle



Trigonometry

- Trig Ratios
- Find angle
- Find side.
- Know exact Trig values

SPRING
2:2

Probability

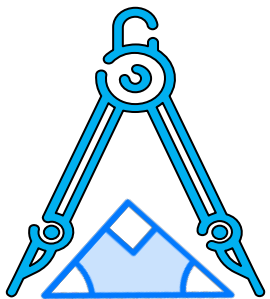
- Frequency Trees
- Expected Frequencies
- Mutually Exclusive
- Tree Diagrams
- Venn Diagrams

Revise Inequalities & Graphs 1

- Plot linear graphs
- $y = mx + c$
- Regions On graph

Inequalities & Regions -

On a number line, and show on a graph



Real Life Graphs

Distance Time Graphs, Speed Time Graphs

Revise Graphs 1

- Plot linear graphs
- $y = mx + c$

Constructions and Loci

- Bisect a line, angle
- perpendicular bisector

SPRING
2:1

Surds

- Simplify
- Expand brackets
- Rationalise

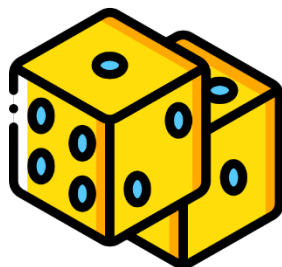
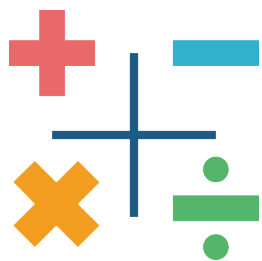
Revise Indices

- Rules of indices

Revise Standard Form

- Convert
- Calculations

AUTUMN
1:2



Linear Equations & Inequalities

- Solve one step, two step
- Brackets
- Number line

AUTUMN
1:1

Formulae

- Substitute into Formula
- Re-arrange Formulae

Revise - Area and Perimeter

- Triangles, Trapezia, Parallelogram
- Circles
- Circumference

Volumes and Surface Area of Prism, Pyramids, Spheres, Cones.

Revise Angles and Shapes

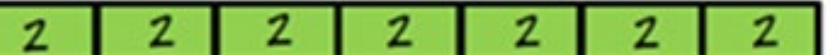
- Angle rules for points, lines triangles
- Angles in parallel lines
- Polygon angles
- Bearings

Factorising Quadratics

Revision – Algebraic Manipulation

- Collect like terms
- Expand and factorise
- Expand double and triple brackets

OUR LEARNING
JOURNEY





**CARDINAL
NEWMAN**
CATHOLIC SCHOOL

Mathematics KS4: Year 10 Set 4

Revision – Algebraic Manipulation

- Collect like terms
- Expand and factorise
- Expand double and triple brackets

Rounding Estimating & Bounds

- Approximation to calculations
- Upper and Lower bounds
- Error Intervals
- Solve Problems

Surds

- Simplify
- Expand brackets
- Rationalise

Trigonometry

- Lengths
- angles in triangles

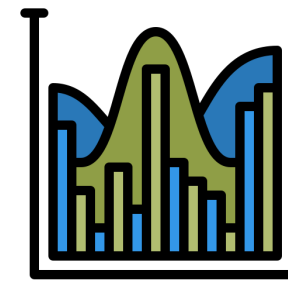
Collecting and Recording Data

- Sampling
- two way tables
- criticize questionnaire

Indices

- Powers of 2, 3, 5
- Use rules of indices
- Negative indices

**SUMMER
3:2**



Revise Pythagoras

- Square numbers
- Finding length

Simultaneous Equations

- Solve algebraically
- using a graph.

Revise linear Equations

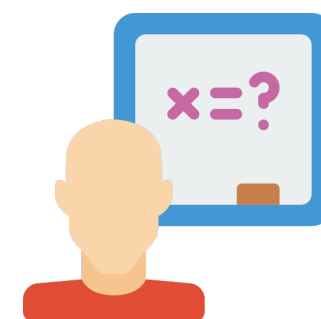
**SUMMER
3:1**

Congruence & Similarity

- Triangles
- Lengths
- Areas
- Volumes

Revise Transformations

- Reflection
- Rotation
- Translation
- Enlargement



Constructions and Loci

- Bisect a line & angle
- perpendicular bisector

**SPRING
2:2**

Probability

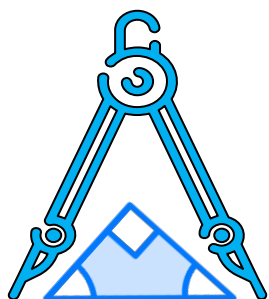
- List Outcomes
- Frequency Trees
- Expected
- Frequencies,
- Mutually Exclusive,
- Tree Diagrams
- Venn Diagrams

Revise Graphs 1

- Co-ordinates
- Plot linear graphs

Graphs 2

- Plot quadratic
- Cubic
- reciprocal



Accurate Drawing and Scale Drawing

Rates of Change

- Speed
- Speed from graph
- Rates of Pay
- Pressure, Density

Real Life Graphs

- Distance Time Graphs
- Speed Time Graphs

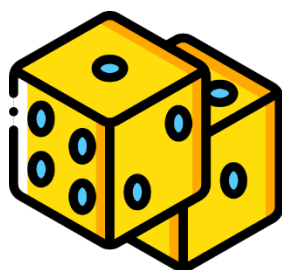
**SPRING
2:1**

Revise Graphs 1

- Plot linear graphs
- $y = mx + c$

Ratio and Proportion –
Express as a fraction, ratio problems with fractions

**AUTUMN
1:2**



Revision – Fractions and Decimals

- Order decimals and fractions
- Four operations

Fractions 3

- Simplify/Equivalent Fractions
- Change between them
- Fraction of amount

Revise Ratio 1

- Use ratio notation
- Simplify ratios
- Ratios as fractions

**AUTUMN
1:1**

Algebraic Manipulation

- Collect like terms
- Expand and factorise
- Expand double and triple brackets

Revise Linear Equations then Linear Inequalities

- Solve one step
- Solve two step
- Brackets
- Number line

Volumes and Surface Area

- Prisms
- Cylinder

Revise - Area and Perimeter

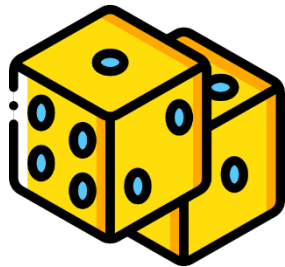
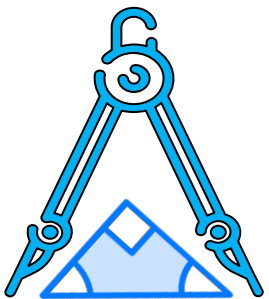
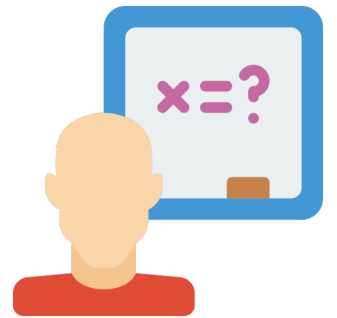
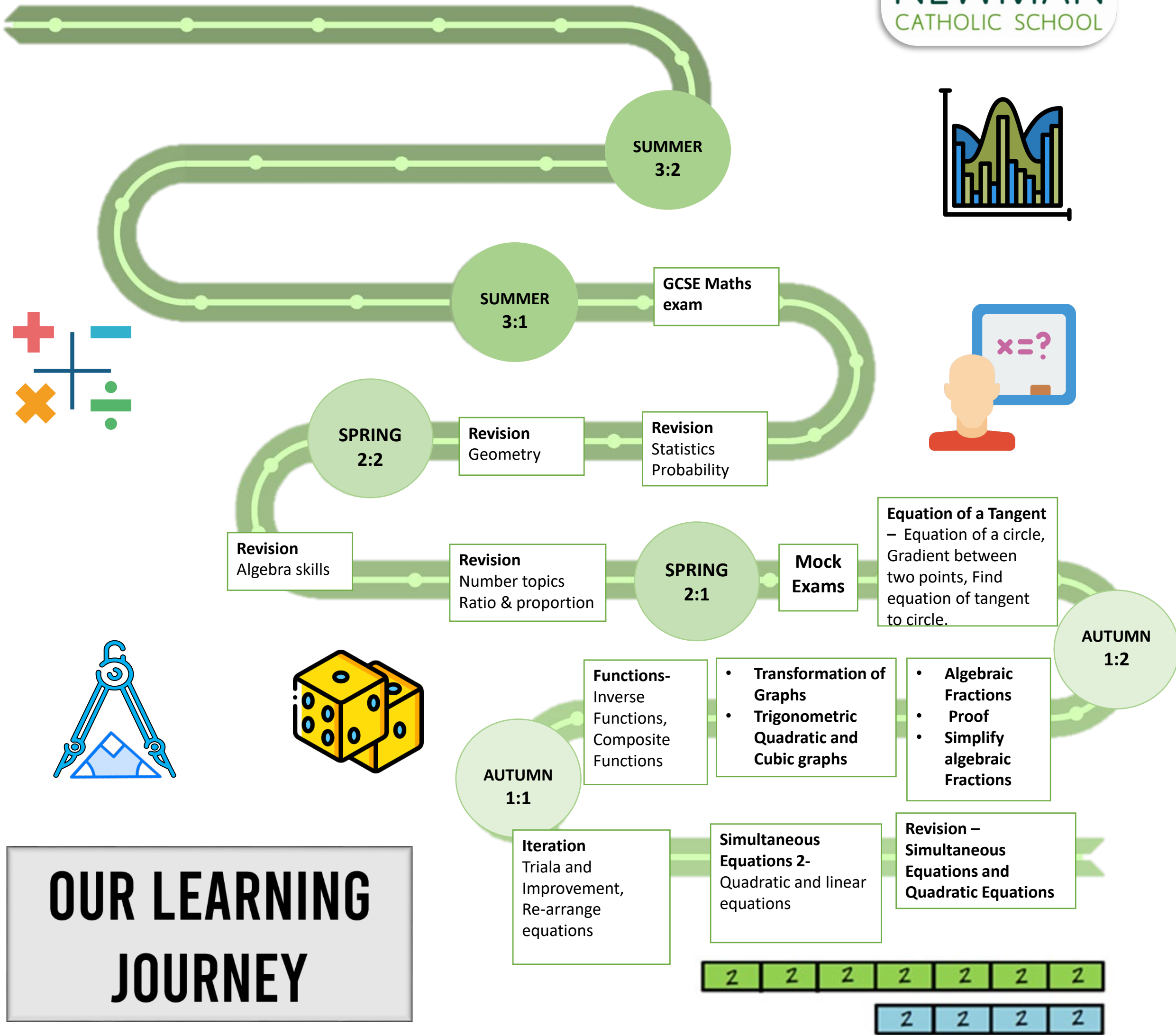
- Triangles, Trapezia, Parallelogram
- **Circles**
- Circumference

**OUR LEARNING
JOURNEY**

2 2 2 2 2 2 2

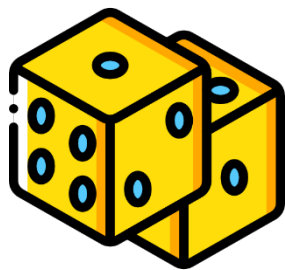
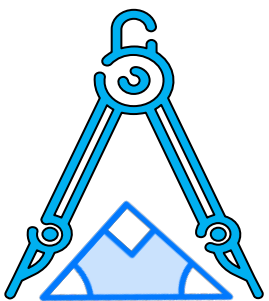
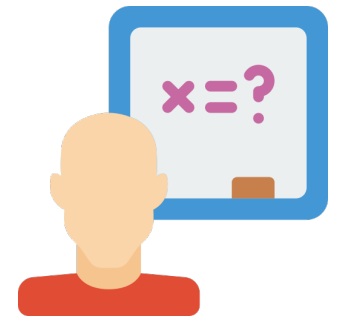
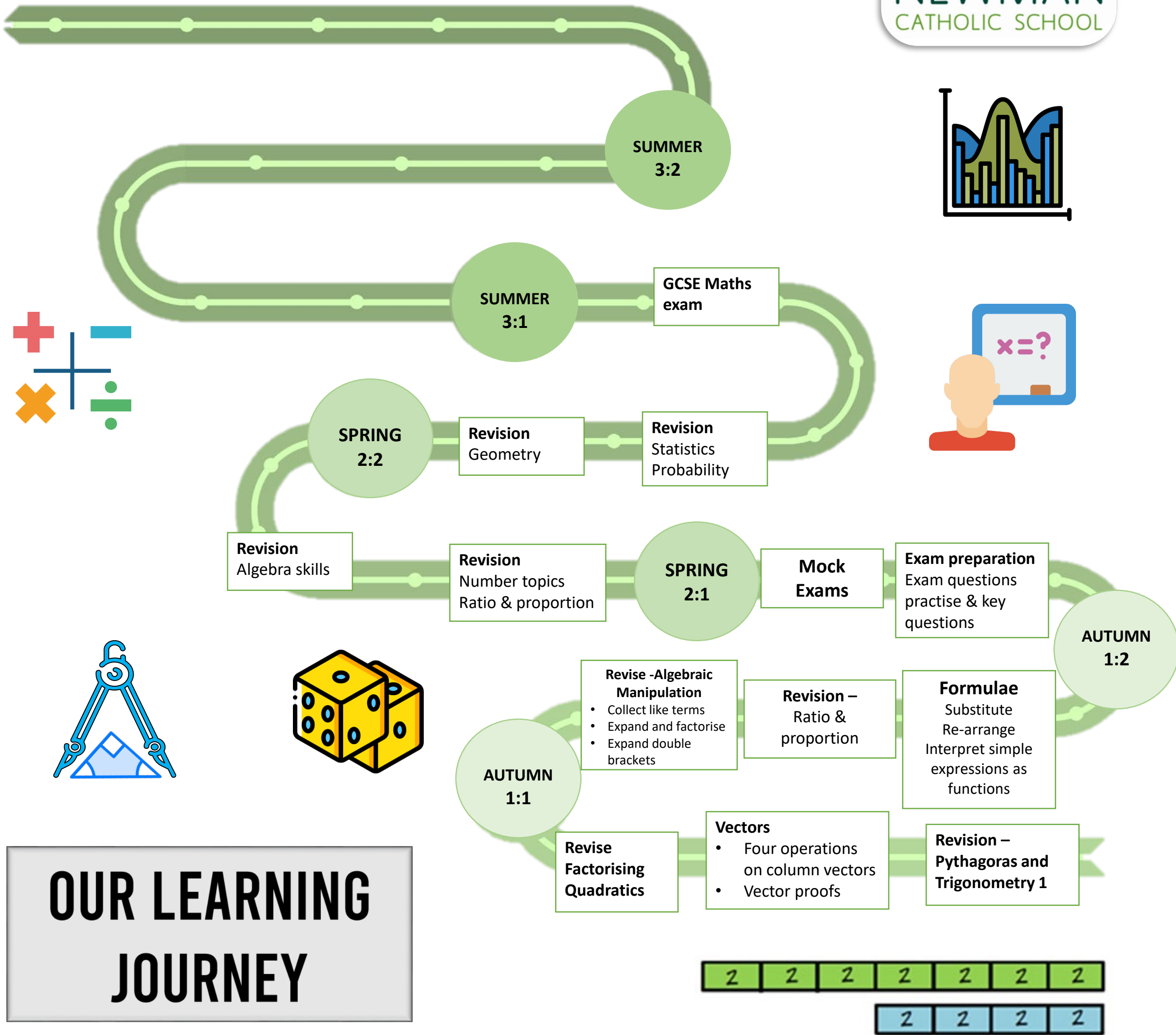
2 2 2 2

Mathematics KS4: Year 11 Sets 1 & 2



**OUR LEARNING
JOURNEY**

Mathematics KS4: Year 11 Set 3



- Revise -Algebraic Manipulation**
- Collect like terms
 - Expand and factorise
 - Expand double brackets

Revision - Ratio & proportion

Formulae
Substitute
Re-arrange
Interpret simple expressions as functions

- Vectors**
- Four operations on column vectors
 - Vector proofs

Revision - Pythagoras and Trigonometry 1

Revise Factorising Quadratics

Mathematics KS4: Year 11 Set 4

