

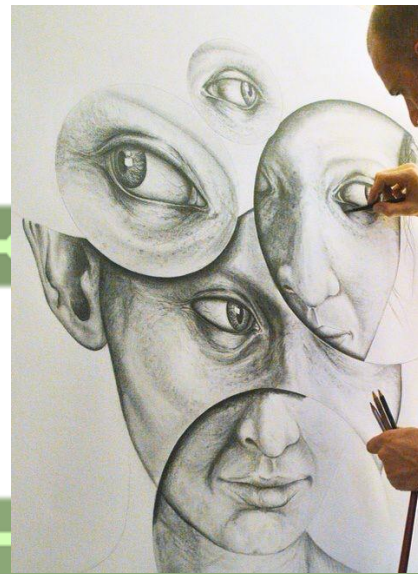
KS5: Y12 A-LEVEL ART

RELATED STUDY

WRITTEN ESSAY (12%)

APRIL Y12 – JAN Y13

Research the Art theme your Personal Investigation is based on. Complete a 1200 word, chaptered essay exploring the research and linking it back to your artwork and artists explored in the Personal Investigation.



SUMMER
3:2

PERSONAL INVESTIGATION

PRACTICAL PORTFOLIO (48%)

APRIL Y12 – JAN Y13

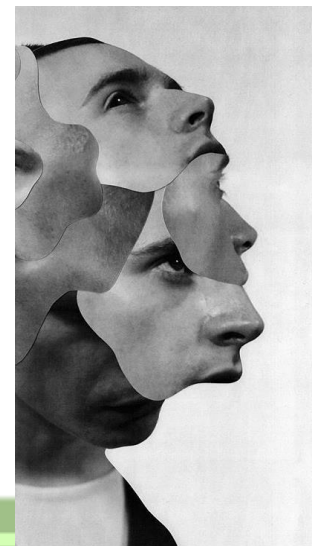
A01 – Develop: Research theme ideas and related artists.
A02 – Refine: Create artwork in response to chosen theme and artists.
A03 – Record: Photograph imagery related to theme and artists. Draw / paint from own photographs, objects and other images.



OCR
Oxford Cambridge and RSA

A LEVEL
Specification
**ART AND
DESIGN**
H600–H606

SUMMER
3:1



PORTRAIT

A02 – Refine: Explore acrylic and oil painting media and techniques.

A03 – Record: Develop portrait lighting skills.

SPRING
2:2



SPRING
2:1



OBJECT

A02 – Refine: Experiment with drawing and painting media.

A03 – Record: Develop raw camera skills, use photos as primary source images from which to draw. Learn how to use lighting studio.

AUTUMN
1:2



AUTUMN
1:1

OUR LEARNING JOURNEY

DETAIL

A02 – Refine: Experiment with drawing, pen and printing media.

A03 – Record: Develop raw camera skills to use as primary source images to draw from.



KS5: Y13 A-LEVEL ART & PHOTOGRAPHY



EXHIBITION
June

SUMMER
3:2



SUMMER
3:1

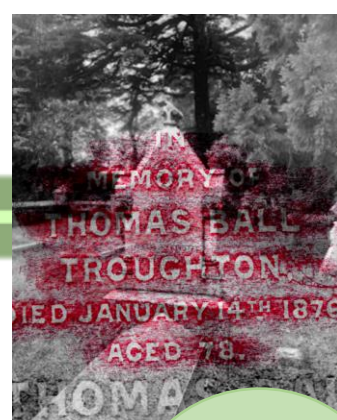
EXTERNALLY SET TASK (40%)

Feb - April

You will be provided with 6 project titles, from which you choose **one**. You then research different artists based on your chosen theme. Photograph and create artwork/edit in their style.

EXAM – 3 day practical exam where you create a final outcomes (edits/artwork) based on the title you explored.

SPRING
2:2



SPRING
2:1



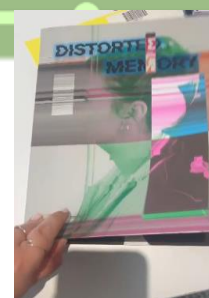
AUTUMN
1:2

RELATED STUDY

WRITTEN ESSAY (12%)

APRIL Y12 – JAN Y13

Research the Art theme your Personal Investigation is based on. Complete a 1200 word, chaptered essay exploring the research, linking it back to your artwork and artists explored in the Personal Investigation.



AUTUMN
1:1



PERSONAL INVESTIGATION

PRACTICAL PORTFOLIO (48%)

APRIL Y12 – JAN Y13

- A01** – Develop: Research theme ideas and related artists.
- A02** – Refine: Create artwork/edits in response to chosen themes and artists.
- A03** – Record: Photograph imagery related to theme and artists. Draw / paint from own photographs, objects and other images.

OUR LEARNING JOURNEY