

PSHE: Year 7



Living in the Wider World (Financial decision making)

In our final unit, we will explore the following topics:

- Saving and borrowing
- Budgeting and making financial choices



SUMMER
3:2

Relationships & Sex Education (RSE) (Friends & Family)

- In this unit, we will learn in lessons;
 - Types of families/friendships
- Living responsibly – behaviour towards others



SUMMER
3:1

Health & wellbeing (Health and Puberty)

In this unit we will learn about the following topics;

- Healthy routines, influences on health
- Puberty, unwanted contact
- Introduction to FGM



SPRING
2:2

Living in the Wider World

In this unit we will learn about the following topics;

- Developing skills and aspirations
- Careers, raising aspirations
- Teamwork and enterprise skills



SPRING
2:1

Relationships & Sex Education (RSE)

In this unit we will learn about the following topics;

- Understanding Who I Am
- Feelings and hormones, stages of pregnancy – how life begins.



AUTUMN
1:2

Health & wellbeing (Transition and safety)

In this unit, we will explore lessons on:

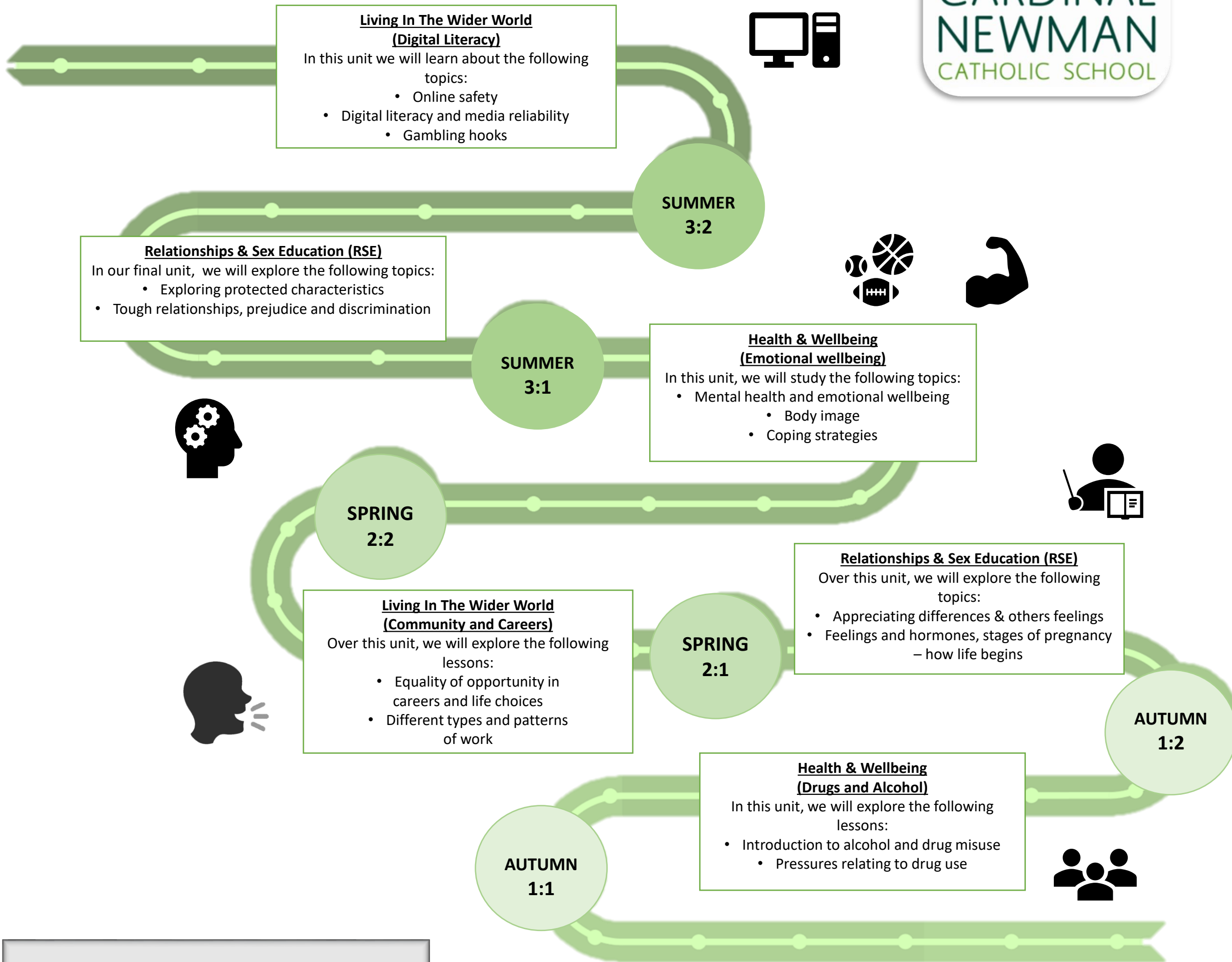
- Transition to secondary school and personal safety in and outside school
- Introduction to first aid



AUTUMN
1:1

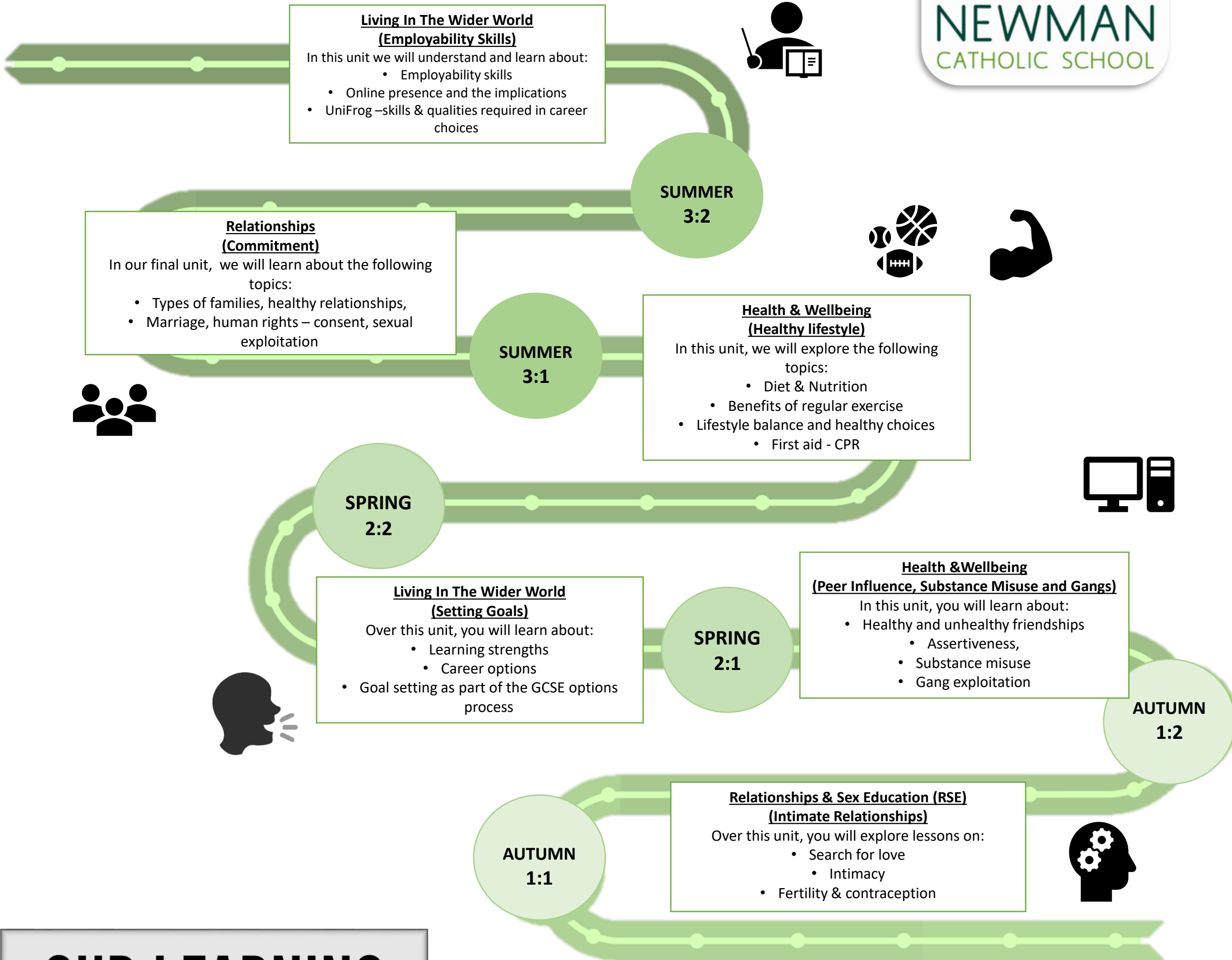
OUR LEARNING JOURNEY

PSHE: Year 8



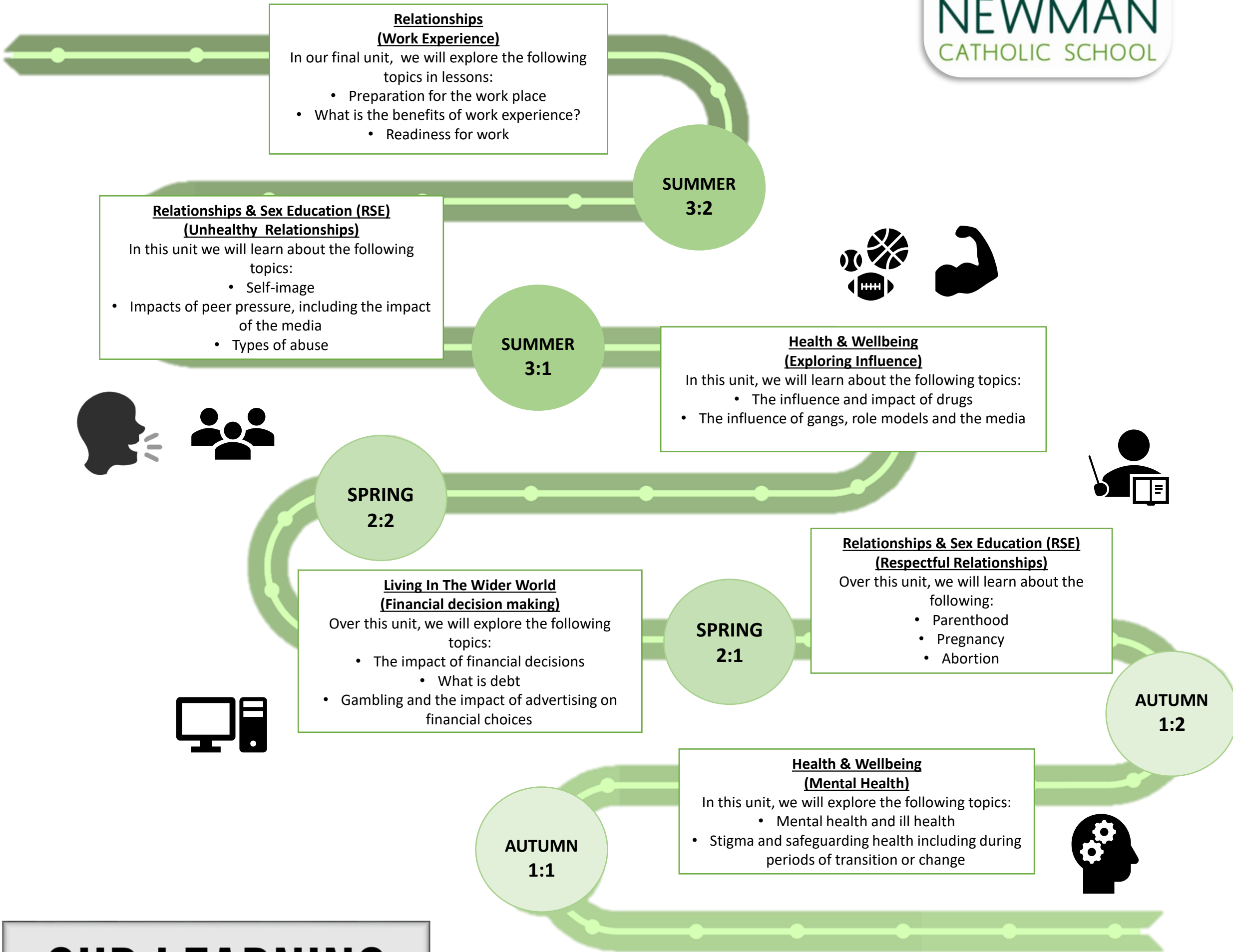
OUR LEARNING JOURNEY

PSHE: Year 9



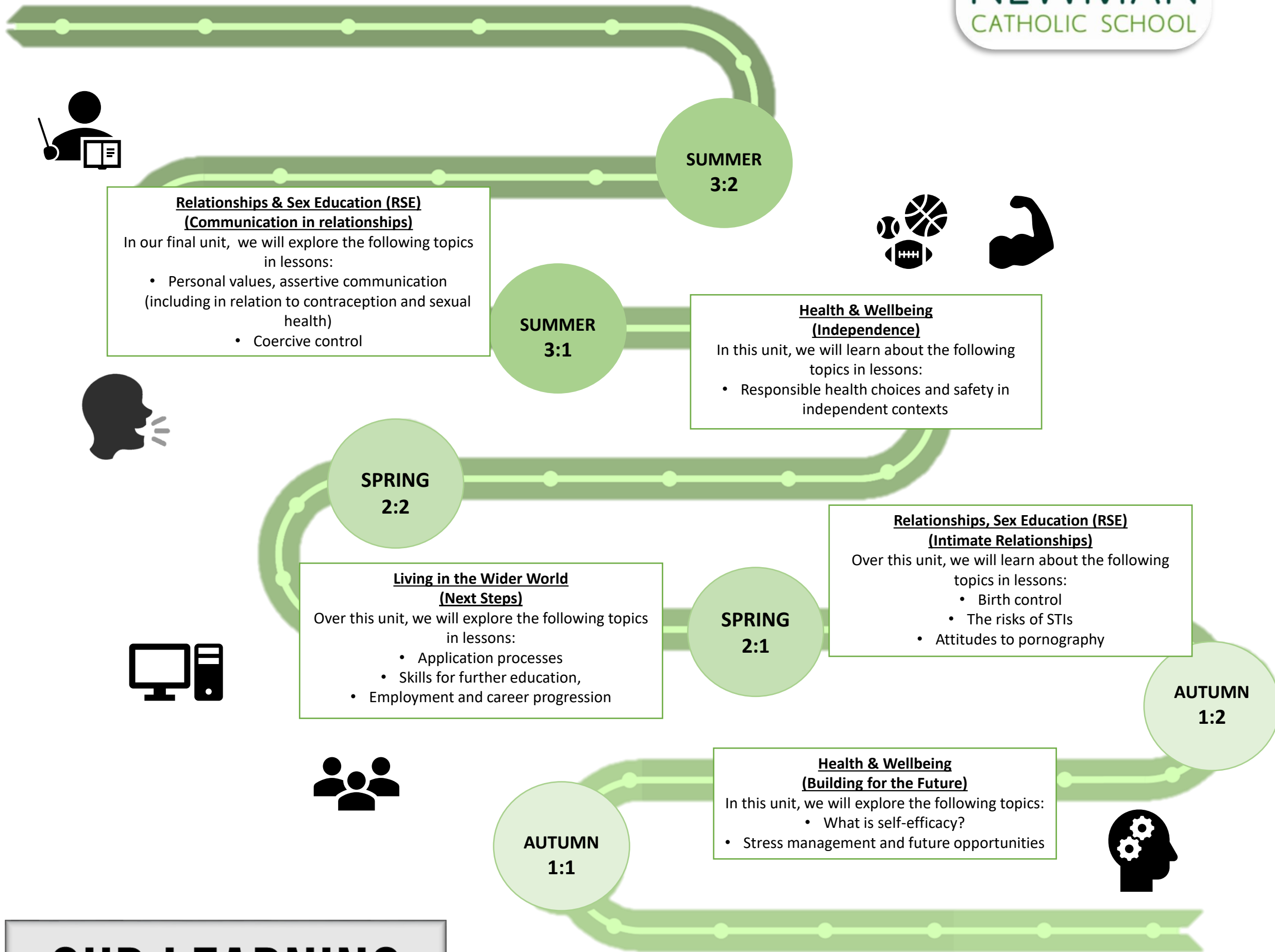
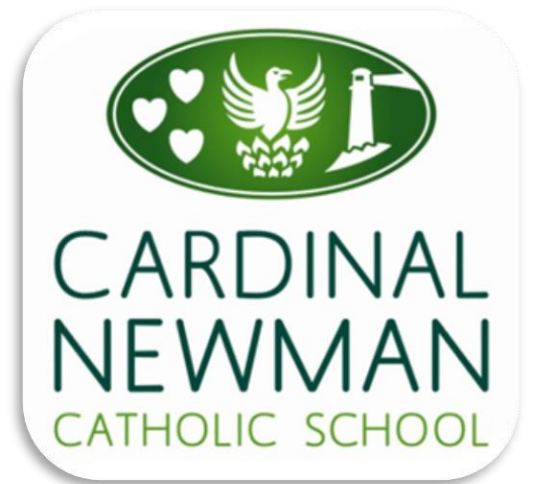
OUR LEARNING JOURNEY

PSHE: Year 10



OUR LEARNING JOURNEY

PSHE: Year 11



OUR LEARNING JOURNEY