



Personal Development Curriculum and Calendar

2023-24

Students follow a pastoral programme each day in tutor time, which includes the following activities:

- ✓ Weekly tutor review (weekly messages, key dates, personal organiser, attendance and achievement data)
- ✓ Weekly assembly (schedule below)
- ✓ Fortnightly talking points (debate-based topics on current issues)
- ✓ Weekly PSHE/RSE sessions (students study a half termly programme of study based around the 3 core PSHE themes)
- ✓ Student council pastoral session (once per half term in preparation for the half termly student council meeting)
- ✓ Academic intervention (weekly for Y11 to prepare them for their exams)
- ✓ Futures preparation (Y12/13 to look at post 18 options and prepare for UCAS)

Passport to Greatness

Our Passport to Greatness award underpins our commitment to ensuring that students develop their cultural capital and have the opportunity to take part in additional activities outside the classroom. Students in KS3 complete enrichment activities and once they have completed a certain amount, they receive the Passport to Greatness Bronze, Silver, Gold or Platinum award. Students are provided with numerous activities, enrichment opportunities are trips, as outlined below:

How many activities do I need to complete to achieve the a

Award	How many activities?
Bronze Passport to Greatness	10
Silver Passport to Greatness	20
Gold Passport to Greatness	30
Platinum Passport to Greatness	40

Note – the amount of activities you have completed carries over from the previous year

We regularly track student engagement in activities and provide opportunities for all students to ensure that our Personal Development curriculum is accessible and inclusive to all students.

Working groups that students can be part of, which run all year round and all students can apply to be part of:

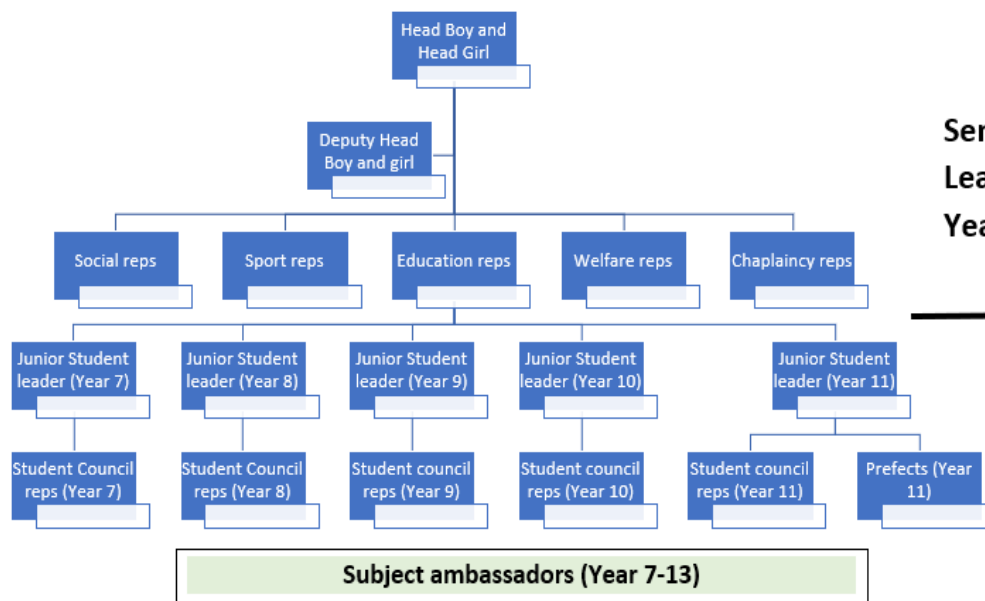
- Cultural diversity group
- Anti-bullying ambassadors
- Reading aloud mentors
- Mental health ambassadors
- Eco committee
- Student Council
- Year 11 prefects
- Student librarians
- School choir
- Year 11 Prom committee



Activities students can regularly take part in (weekly):

- Daily worship (assemblies and lessons)
- Chapel sessions
- Extracurricular timetable – updated termly
- Radio Newman contributions
- Community initiatives (e.g. tree planting, gardening, WWT environment sessions, Creative kindness, Memory lane café)
- Inter tutor competitions (half termly – different competition each half term)
- Sporting fixtures
- Key stage three – tutor assemblies
- Faith in Action Diocesan Award (KS3)
- Charity events
- Sports leaders (Year 11/12)

Whole school student leadership hierarchy



**Senior Student
Leadership team:
Year 12-13**

**Junior Student
Leadership team:
Year 7-11**



Calendar 2023-2024 Weekly Plan of Personal Development Activities



Week		Monday	Tuesday	Wednesday	Thursday	Friday	Events	Assembly theme	Catholic Life	Trips
1 A	04/09/ 2023			Student leadership launch				Restart		
2 B	11/09/ 2023	Junior student leadership application deadline	PSHE (Health and wellbeing)					Behaviour and attitudes	Holy Cross Feast Day Mass (Thurs) Y10 Y12 Birmingham University visit (Tues)	
3 A	18/09/ 2023	Intertutor competition (Speed chess)	PSHE (Health and wellbeing)	Open Evening – student leadership support			Loudmouth PSHE production Y9 (Thurs)	Student leadership	Chaplaincy C'sion Mass (Thurs)	Y11 Geog Trip Post 16 Aerospace Careers trip
4 B	25/09/ 2023	Intertutor competition (Speed chess)	PSHE (Health and wellbeing)					Careers		Y11 National Manufacturing Day trip (Careers)
5 A	02/10/ 2023	Intertutor competition (Speed chess)	Maths Challenge PSHE (Health and wellbeing)		National Poetry Day		N Poetry Day UKMT Maths Challenge	Saint John Henry Newman		Bushcraft Trip (Yr7 Weds to Friday) Yr13 Brandon Marsh trip (Science)
6 B	09/10/ 2023	Student leadership launch Intertutor competition (Speed chess)	PSHE (Health and wellbeing)		IB Award			Cultural diversity	SJHN Feast Day (Mon)	
7 A	16/10/ 2023	Intertutor competition (Speed chess)	PSHE (Health and wellbeing)			Student Council Meeting		Teaching and learning		
8 B	23/10/ 2023	Intertutor competition (Speed chess)	PSHE (Health and wellbeing)				Loudmouth PSHE Y7 (Wed)	Online safety		

AUTUMN HALF TERM HOLIDAY



Week		Monday	Tuesday	Wednesday	Thursday	Friday	Events	Assembly theme	Catholic Life	Trips
9 A	06/11/2023	Intertutor competition (5 a side football)	PSHE (Relationships)			Remembrance Day Service		Standards and expectations plus assessments	Remembrance Day	
10 B	13/11/2023	MAC Charity Day Intertutor competition (5 a side football)	PSHE (Relationships)		Y11/13 Provider Event			Anti-bullying week		
11 A	20/11/2023	Intertutor competition (5 a side football)	PSHE (Relationships)				PiXL English Festival (Thurs)	Tutor group assemblies (KS3) English masterclass (KS4)	CTK Parish Mass (Sun)	
12 B	27/11/2023	Intertutor competition (5 a side football)	PSHE (Relationships)					Cultural event launch	ARYPT Christmas Residentia (Fri-Sun)	
13 A	04/12/2023	Intertutor competition (5 a side football)	PSHE (Relationships)				PiXL Maths Fest (Wed)	Advent	Start of Advent	Y9 Soli House Trip
							Careers across the curriculum fortnight Y7-10		Y9 Soli House Trip	Wizard of Oz – Planet Ice Year 8&9 A Christmas Carol Theatre trip (Y11)
14 B	11/12/2023	Intertutor competition (5 a side football)	PSHE (Relationships)			Student council Meeting		Celebration assemblies		Year 11 rewards trip - Skydome
15 A	18/12/2023		PSHE (Relationships)					Tutor group assemblies (KS3) HoY assembly (KS4)		