



SUBJECT OVERVIEWS

Start Here. Go Anywhere.

**Subjects and entry requirements for 2024 entry may be subject to change*

Nos sumus simpliciter optimum

Sixth Form at CNCS

Year 12 Entry Requirements for September 2024 entry.

For post-16 study you will require 5 Grade 9-4 GCSE/BTEC passes including English and Maths at grade 4.

SUBJECT SPECIFIC GRADES: individual subjects have their own entry requirements as shown below (*subjects and entry requirements may be subject to change*)

Aspire, Achieve, Enjoy.

Subject Specific Entry Requirements*	
I wish to study...	I require a minimum of...
Applied Science	Grade 4 in Biology, Chemistry and Physics
Art	Grade 5 in Art
Biology	Grade 6 (near 7) in Biology and a further Grade 6 in Chemistry or Physics plus a Grade 5 in Maths
Business	Grade 5 in English and Maths
Chemistry	Grade 6 (near 7) in Chemistry and a further Grade 6 in Biology or Physics plus a Grade 5 in Maths
Computer Science	Grade 5 or equivalent in ICT/Computer Science desirable
Criminology	5 GCSES at grade 4 or above which must include Maths and English
English Language & Literature	Grade 5 in English Literature and Grade 5 in English Language
English Literature	Grade 6 in English Literature and Grade 6 in English Language
Further Maths	Grade 7 in Maths
Geography	Grade 5 in Geography or English
History	Grade 6 in History or English
Health and Social Care	5 GCSES at grade 4 or above which must include Maths and English
Computer Science	Grade 4 in ICT/Computer Science desirable
Law	Grade 6 in English Language
Maths	Grade 6 in Maths – must be near a Grade 7
Media	5 GCSES at grade 4 or above which must include Maths and English
Photography	5 GCSES at grade 4 or above which must include Maths and English
Physics	Grade 6 (near 7) in Physics and a further Grade 6 in Chemistry or Biology plus a Grade 6 in Maths
Psychology	Grade 6 in Science and English and Grade 5 in Maths
Product Design	Grade 5 in Maths and Product Design (GCSE) or a portfolio of work if no experience of Product Design at KS4
Religious Studies	Grade 5 English
Sport	5 GCSES at grade 4 or above which must include Maths and English

*subject to change



DO YOU WANT TO STUDY APPLIED SCIENCE IN THE SIXTH FORM?



BTEC Level 3 Extended Certificate – Applied Science

TO STUDY APPLIED SCIENCE YOU NEED GRADE 5 IN TWO SCIENCE SUBJECTS AND A GRADE 5 IN MATHS



PEARSON

What will I study?

- BIOLOGY, CELLS & ORGANS
- CHEMISTRY; ATOMIC STRUCTURE & THE PERIODIC TABLE
- PHYSICS; WAVES
- PRACTICAL TECHNIQUES

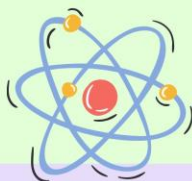
Speak to Mrs Shepherd to find out more!



How is it assessed?

Where can applied Science take me?

Nursing, midwifery, paramedic science, radiography. The science BTEC demonstrates a wide range of transferable skills required by many courses and employers.



3 x 40 minute exam in Biology, Physics and Chemistry.
1x1.5 hour exam practical investigations.
1 x portfolio practical techniques.
1 x portfolio on human organ systems.



DO YOU WANT TO STUDY BIOLOGY IN THE SIXTH FORM?



AQA

TO STUDY AT A-LEVEL YOU NEED A GRADE 6 IN YOUR CHOSEN SUBJECT AND ONE OTHER SCIENCE AND MATHS

Speak to Mrs Shepherd to find out more!

What will I study?

- BIOLOGICAL MOLECULES
- CELLS
- TRANSPORT
- GENETICS
- HOMEOSTASIS
- GENES & DNA



How it is assessed?

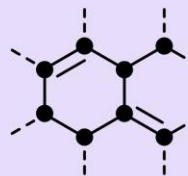
3 x 2 hours exam papers at the end of Year 13 and practical skills throughout the course.

Studying a science can take you into healthcare, law, engineering, higher level apprenticeships. Science A-Levels demonstrate a wide range of transferrable skills required by many courses and employers.





DO YOU WANT TO STUDY CHEMISTRY IN THE SIXTH FORM?



TO STUDY AT A-LEVEL YOU NEED A GRADE 6 IN YOUR CHOSEN SUBJECT AND ONE OTHER SCIENCE AND MATHS

AQA



Speak to Mrs Mason to find out more!

What will I study?

- **PHYSICAL CHEMISTRY**
E.G. ATOMIC STRUCTURE
- **INORGANIC CHEMISTRY**
E.G. METALS AND THEIR REACTIONS
- **ORGANIC CHEMISTRY**
E.G. ALKANES AND ALCOHOLS

Studying a science can take you into healthcare, law, engineering, higher level apprenticeships. Science A-Levels demonstrate a wide range of transferrable skills required by many courses and employers.

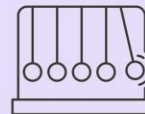
How it is assessed?

3 x 2 hours exam papers at the end of Year 13 and practical skills throughout the course.





DO YOU WANT TO STUDY PHYSICS IN THE SIXTH FORM?



TO STUDY AT A-LEVEL YOU NEED A GRADE 6 IN YOUR CHOSEN SUBJECT AND ONE OTHER SCIENCE AND MATHS

AQA



What will I study?

- **PARTICLES**
- **MECHANICS**
- **ELECTRICITY**
- **WAVES**
- **FIELDS**
- **NUCLEAR PHYSICS**

Speak to Mrs Mason to find out more!



How it is assessed?

3 x 2 hours exam papers at the end of Year 13 and practical skills throughout the course.

Studying a science can take you into healthcare, law, engineering, higher level apprenticeships. Science A-Levels demonstrate a wide range of transferrable skills required by many courses and employers.





Interested in studying Maths in Sixth Form?

AQA

To study Maths at Level, you will need to achieve a high Grade 6 in GCSE Maths and to study Further Maths, Grade 7+.

What will I study?

The course is split into three broad areas, Pure Maths, Mechanics and Statistics including subtopics on:

- Proof
- Algebra and functions
- Coordinate geometry
- Sequences and series
- Trigonometry
- Exponentials and logarithms
- Differentiation & Integration
- Numerical methods
- Vectors
- Kinematics
- Forces and Newton's laws and more...

How it is assessed?

3 examinations
2 hours each

Where can A-Level Maths take you?

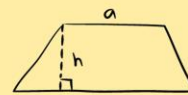
Maths is viewed as a highly desirable subject due to its versatility and as an essential prerequisite to studying most sciences at a further level, as such can lead to a wide range of careers including

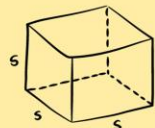
- Accountancy and Finance
- Engineering
- Data Analysis and Statistics
- Coding and Software Design
- Architecture
- Medicine

Speak to Mr Heyes to find out more!

$$\frac{x}{a} + \frac{y}{b} = 1$$

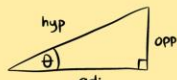



$$A = \frac{a+b}{2} h$$



$$V = s^3$$




$$\sin(\theta) = \frac{\text{opp}}{\text{hyp}}$$



Interested in studying Art or Photography in Sixth Form?



OCR

To study art and/or photography we ask that you gain at least a 4 in art or photography at GCSE.

Speak to the art team to find out more!

What will I study?

- A range of artists and photographers
- Media and techniques
- Ways to develop your creativity
- Camera skills and technical work
- How to look at art and analyse
- How to pursue a career in art

What will I be assessed on?

- Sketchbook or digital slides work
- Photographs and recordings
- Image analysis skills
- Self chosen themes
- Creativity and independence
- Working to schedules and deadlines

Where can Art/Photography take you?

- Advertising
- Digital marketing
- Graphic design
- Fine art
- Art therapy
- Game Design
- Architecture
- Interior Design
- Fashion

Take a look at our work on
@CNCSArt





Interested in studying Design Technology: Product Design in Sixth Form?



OCR

To study Product Design at A-Level, you will need a GCSE in a Technology Subject or a design portfolio.
GCSE grade 4 in Maths is preferred.

What will I study?

- Identifying requirements
- Learning from existing products and practice
- Implications of wider issues
- Design thinking and communication
 - Material considerations
 - Mechanical understanding
- Manufacturing processes and techniques
- Viability of design solutions
 - Health and safety.

How it is assessed?

NEA - Innovation Challenge 50%
Paper 1 - Principles of Product Design 26.7%
Paper 2 - Problem Solving in Product Design 23.3%

Where can Product Design take you?

- Architecture
- CAD engineer
- Clothing/textile technologist
- Exhibition designer
- Furniture designer
- Interior and spatial designer
- Product designer
- Advertising art director
- Automotive engineer
- Furniture conservator/restorer
- Graphic designer
- Materials engineer
- Product manager
- Production designer, theatre/television/film
- Stylist





Interested in studying Media Studies in Sixth Form?



EDUQAS

To study Media Studies at Level, you will need to achieve a Grade 5 in English Language and/or English Literature.

What will I study?

Component 1: Media Products, Industries and Audiences

Texts of study:

- | | |
|--|---|
| 1. Kiss of the Vampire Film Poster | 1. Assassin's Creed Franchise |
| 2. Superhuman advert | 2. Superhuman advert |
| 3. Tide print advert | 3. Tide print advert |
| 4. The Daily Mirror: front page and double page: 1st February 2022 | 4. The Times: front page: 1st February 2022 |
| 5. The Times: front page: 1st February 2022 | 5. I. Daniel Blake |
| 6. Formation by Beyoncé: music video | 6. Black Panther |
| 7. Riptide by Vance Joy: music video | 7. Have you heard George's Podcast? |

Component 2: Media Forms and Products in Depth

- Section A – Television in the Global Age
- Humans (UK/US) Series 1 Episode 1 (2015)
 - The Returned (France) Season 1 Episode 1 Camille (2012)
- Section B – Magazines: Mainstream and Alternative Media
- Woman (23–29 Aug 1964)
 - Adbusters (May/June 2016 Vol.23 No.3)
- Section C – Media in the Online Age
- Zoella/Zoe Sugg

Component 3: Cross-Media Production

Non-examined assessment (NEA). 50% of qualification
Release date of the set brief: 1st March annually based on ONE of the following: Television, Advertising and Marketing: Film, Advertising and Marketing: Music, Magazines

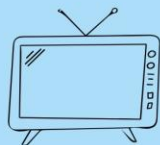
How it is assessed?

70% Examination: 2x Papers
30% Coursework: A cross-media production of their own work based on a set brief.

Where can Media Studies take you?

- Broadcaster
- Writer
- Director
- Producer (and other production roles from runner upwards)
- Researcher
- Technical roles such as: sound engineer, lighting technician or camera operator.
- Illustrator or animator
- Journalist or photo journalist
- Web designer
- Video game designer
- Social Media Executive
- Social Media Content designer/manager
- Teacher
- Roles that haven't been created yet!

Speak to Miss Cunningham to find out more!



SUBSCRIBE



DO YOU WANT TO STUDY ENGLISH IN SIXTH FORM?



PEARSON English Literature

TO STUDY ENGLISH LITERATURE YOU WILL NEED 5 GCSE'S AT A GRADE 5 AND AT LEAST A GRADE 6 IN ENGLISH LITERATURE.



What will I study?



- Othello - Shakespeare
- A Streetcar named Desire - Williams
- Collection of poems by John Donne
- The Picture of Dorian Gray - Wilde
- Dracula - Stoker
- A selection of Modern Poetry
- Coursework based on 'The Bloody Chamber' by Carter



Speak to Mrs Samworth to find out more!

This A-Level is 80% examination and 20 % coursework.

Why study English Literature?

Studying English Literature is more than just an opportunity to indulge your love of reading and discussing books. It develops your critical, analytical and research skills, which are vital for whatever you plan to study at university. It also offers a chance to develop your own writing.

English Language and Literature

TO STUDY LEVEL 3 ADVANCED GCE IN ENGLISH YOU WILL NEED 5 GCSE'S GRADE 5 AND AT LEAST A GRADE 5 IN ENGLISH LANGUAGE.

PEARSON



What will I study?

- Voices and Speeches Anthology
- A range of non-fiction texts
- A Streetcar named Desire - Williams
- The Great Gatsby - Fitzgerald
- Coursework based on 'The Kite Runner' by Hosseini and 'The Lost Continent' by Bryson



Speak to Mr McDonnell to find out more!

This A-Level is 80% examination and 20 % coursework.

Why study English Language and Literature?

This course is an opportunity to study both spoken and written English. Discussing fiction, non-fiction, drama and prose will hone your critical and analytical skills. You'll also have plenty of scope to develop your own writing - all incredibly useful preparation for higher Education, making this the ideal arts course to complement your other subjects.



Interested in studying History in Sixth Form?



AQA



To study History at A-Level, the requirements are a grade 6 in History and English.

What will I study?

- Component 1: Breadth study - 1C The Tudors: England, 1485–1603
- Component 2: Depth study - 2Q The American Dream: reality and illusion, 1945–1980
- Component 3: Historical investigation (Personal study on Ireland)

Where can A-Level History take you?

- Law
- Journalism
- Travel
- Architecture
- Media / Gaming development
- Film
- Police and Armed forces
- Environmental
- Conservation

How it is assessed?

Component 1: Written exam for
2 hours 30 minutes
40% of A-level

Component 2: written exam for
2 hours 30 minutes
40% of A-level

Component 3
3500–4500 words essay
20% of A-level

Speak to Mrs Good
to find out more!





Interested in studying Geography in Sixth Form?



EDEXCEL



To study Geography at A-Level, we recommend a grade 5 in Geography but this is not compulsory and a grade 5 in English.

What will I study?

Ectonic Hazards, Changing Landscapes, Water vs. Energy Insecurity
Globalisation, Regeneration, Superpowers & Migration
Players, Attitudes, Actions, Future & Uncertainties

Where can A-Level Geography take you?

- Architecture
- Climatologist
- Urban Land Planner
- Travel & Tourism
- Public Health Officer
- Education - Teacher
- Researcher & Reporter
- Social Media Publicist
- Gaming/Streaming
- Data/Business/Marketing Analysts

How it is assessed?

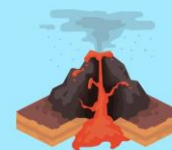
Paper 1 : Dynamic Landscapes: Written examination (30% of A Level),

Paper 2 : Dynamic Places: Written examination (30% of A Level),

Paper 3 (9): Written examination (20% of A Level), 70 marks

Non-Examination Assessment:
Independent Investigation (20% of A Level) (3000-4000-word assignment - Fieldwork).

Speak to Mr Miller to find out more!





Interested in studying A-Level Law?

To study A-Level Law will require a grade 6 in GCSE English. Applied law standard entry requirements.

EDUQAS FOR A LEVEL
PEARSON FOR APPLIED
LAW

What will I study?



- English Legal system
- Criminal law
- Tort Law
- Contract law

Where can A-Level Law and Applied Law take you?

- Arbitrator
- Barrister
- Barrister's clerk
- Chartered legal executive (England and Wales)
- Company secretary
- Costs lawyer
- Detective
- Licensed conveyancer
- Paralegal
- Solicitor

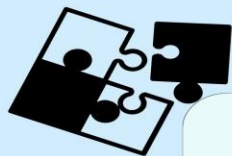
How it is assessed?

A level Law has examinations at end of Year 2.

Applied law has 1 internal assessment and 1 external exam, each year.



Do you want to study Psychology in Sixth Form?



To study A-Level Psychology, the requirements are a grade 6 in Science, and English and a grade 5 in maths.

What will I study?

- Social Influence
- Memory
- Attachment
- Psychopathology
- Approaches
- Biopsychology
- Research methods
- Issues and Debates
- Relationships
- Schizophrenia
- Aggression

How it is assessed?

3 x 2 hour exam at the end of Year 13.

AQA

Where can A-Level Psychology take me?

- Marketing
- Business Development
- Accountancy
- Human Resources
- Forensic Psychology
- Occupational Therapy
- Clinical Psychology
- Nursing
- Teaching





DO YOU WANT TO STUDY RELIGIOUS STUDIES IN SIXTH FORM?



OCR

Religious Studies

TO STUDY RELIGIOUS STUDIES AT A-LEVEL YOU NEED AN ENGLISH GCSE AT GRADE 5 AS WELL AS 5 GCSE'S.

What will I study?

- Philosophy of Religion
- Ethics
- Christianity - Development of thought and place in the modern world



Where can Religious Studies take me?

Teaching, law, Journalism, Human Resources,
Counsellor, Social worker, Police officer,
Archivist, Civil service administrator
and International aid/ development worker.

How it is assessed?

This A-Level is 100% examination. 3 exams - 2 hours





Criminology Level 3 Applied Diploma



To study Criminology Level 3 Applied Diploma, will require a grade 5 or above in GCSE English.



WJEC

What will I study?

Unit 1: Changing Awareness of Crime (CA)
Unit 2: Criminological Theories (exam)

Unit 3: Crime scene to court room (CA)
Unit 4: Crime and punishment (exam)

Where can Criminology Level 3 Applied Diploma take you?

- Probation officer
- Prison guard
- Social worker
- Youth worker
- Police officer
- Barrister / Solicitor
- Teacher or Lecturer
- Forensic psychologist
- Charity worker
- Community development worker
- Counsellor

How it it assessed?

2 internal assessment
and 2 external
examinations.





Do you want to study Business in Sixth Form?



To study A-Level Business, you must have a Grade 5 minimum in Maths, English and Business if taken.

What will I study?

- Finance
- Human resources
- Motivation
- Basic economic theory

How it is assessed?

There are 3 external examinations sat in the summer of Year 13. Paper 1 and Paper 2 are based on small business case studies and Paper 3 is based on a business sector for example the leisure industry.

Where can A-Level Business take me?

- Education
- Accountancy
- Marketing, Law
- Financial Services
- Human Resources

**EDEXCEL
BUSINESS**

Speak to Ms Bassett
to find out more!





Interested in studying Computer Science in Sixth Form?

OCR

To study Computer Science, you will need a grade 5 in Maths and English. Computer Science GCSE is a benefit but is not a requirement.

What will I study?

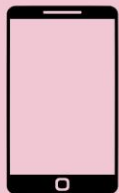
Within the course, students study a range of theory topics. These include the principles and understanding linked to programming, hardware and software, networks, systems development life cycles and implications of computer use.

How it is assessed?

A Level Computer Science is assessed through two written exams (each worth 40%) and a Programming Project (worth 20%).

Where can Computer Science take you?

- Business Analyst
- App Developer
- Cyber intelligence officer
- Games Developer
- Computer Programmer
- IT Technician
- Software developer
- Data Analyst
- Robotics engineer
- Level 4 higher apprenticeships





BTEC National Extended Certificate Level 3 in Health and Social Care



To study Health and Social Care Level 3 BTEC you need 5 GCSE's at grades 5–9, a genuine interest in health and social care issues, a positive 'can do' attitude to learning and commitment to your studies.

What will I study?

There are 4 units of study: 2 mandatory units, 1 synoptic unit and 1 optional unit.

Year 12 – Unit 1: human Lifespan Development (90 minute written exam)

Unit 5: Meeting Individual Care and Support Needs (2 internal assignments)

Year 13 – Unit 2: Working in Health and Social Care (90 minute written exam)

Unit 11: Psychological Perspectives (2 internal assignments – This unit is optional)

PEARSON



A BTEC National Level 3 prepares you for employment and provides an excellent springboard to:

- Apprenticeships/employment
- Foundation degree Health and Social/ Early years
- Pre-Degree programme at Coventry University

With further training students may go into careers such as nursing, Midwifery, Nursery & Primary teaching, Psychology, Social Work, Early years/ Health and Social care Provision Management, Counselling and many more!

How it is assessed?

50% External exams
50% Coursework/assignments



Speak to Mrs Donohue
to find out more!



DO YOU WANT TO STUDY SPORT IN THE SIXTH FORM?



PEARSON

BTEC Level 3 National Extended Certificate in Sport

YOU WILL NEED 5 GCSEs OF GRADE 9 - 4, THIS QUALIFICATION HAS BEEN DEvised ON THE ASSUMPTION THAT STUDENTS WILL TAKE IT ALONGSIDE OTHER A LEVEL/LEVEL 3 PROGRAMMES POSSIBLY IN SCIENCE BASED SUBJECTS OR PSYCHOLOGY AND SOCIOLOGY.

What will I study?

Unit 1 - Anatomy and Physiology
Unit 7 - Practical Sports Performance
Unit 2 - Fitness Training and Programming for Health, Sport and Wellbeing
Unit 3 - Professional Development in the Sports Industry

How it is assessed?

2x 90 minute examinations.
Internal assignments and practical tasks.

Speak to Mr Minshull to find out more!

Where can Extended Certificate in Sport take me?

- Higher education and a career because they are each designed with a clear purpose to support defined progression routes into higher education or employment
- Build high-level skills such as teamwork, creative thinking and presentation skills.
- Develop independent research and study skills essential for success at university.

Teacher, Physio therapist, Sports psychology, Management roles in Fitness context, Working in the sports industry, Sport journalism.
Other areas include careers in exercise and fitness, coaching and leadership, sports development and the outdoors.





Cardinal Newman Sixth Form: Study Here. Go Anywhere.



Start your journey today!