

CARDINAL NEWMAN CATHOLIC SCHOOL: PERSONAL DEVELOPMENT CURRICULUM

‘CNCS provides a rich and varied quality enrichment programme that provides students with opportunities to meet the school motto ‘We are all made for greatness’. The school believes, it is the cultural capital experiences a student has that empowers them to be global citizens needed in adulthood in the 21st century.’

Our ASPIRE values:

We strive to develop our six ASPIRE values to prepare students for the wider world and world of work.

| Value | Explanation |
|-------------|--|
| Achievement | <i>Achieve through dynamic, creative, innovative teaching and learning</i> |
| Service | <i>Serve God, each other and our community</i> |
| Peace | <i>Peacemakers in our homes, school and community</i> |
| Integrity | <i>Integrity shines through all of our endeavours</i> |
| Respect | <i>Respect for ourselves, each other and our environment</i> |
| Excellence | <i>Excellence in our learning with positivity and perseverance</i> |

Personal, Social, Health and Economic Education (PSHE)

Students study a well thought out, age relevant curriculum following the three key themes:

1. Relationships and Sex Education
2. Health and Wellbeing
3. Living in the wider world

Careers Education includes:

- ✓ *Options & Transition*
- ✓ *Pathways, inc. apprenticeships*
- ✓ *Job sectors & LMI*
- ✓ *Types of employment*
- ✓ *World of Work inc. work experience*
- ✓ *Careers & Professions*
- ✓ *Volunteering*
- ✓ *Unifrog*

Character education

By the time students leave CNCS, we aim to prepare them for the world around them, through providing leadership opportunities, a chance to reflect on their own character, enrichment and extracurricular opportunities

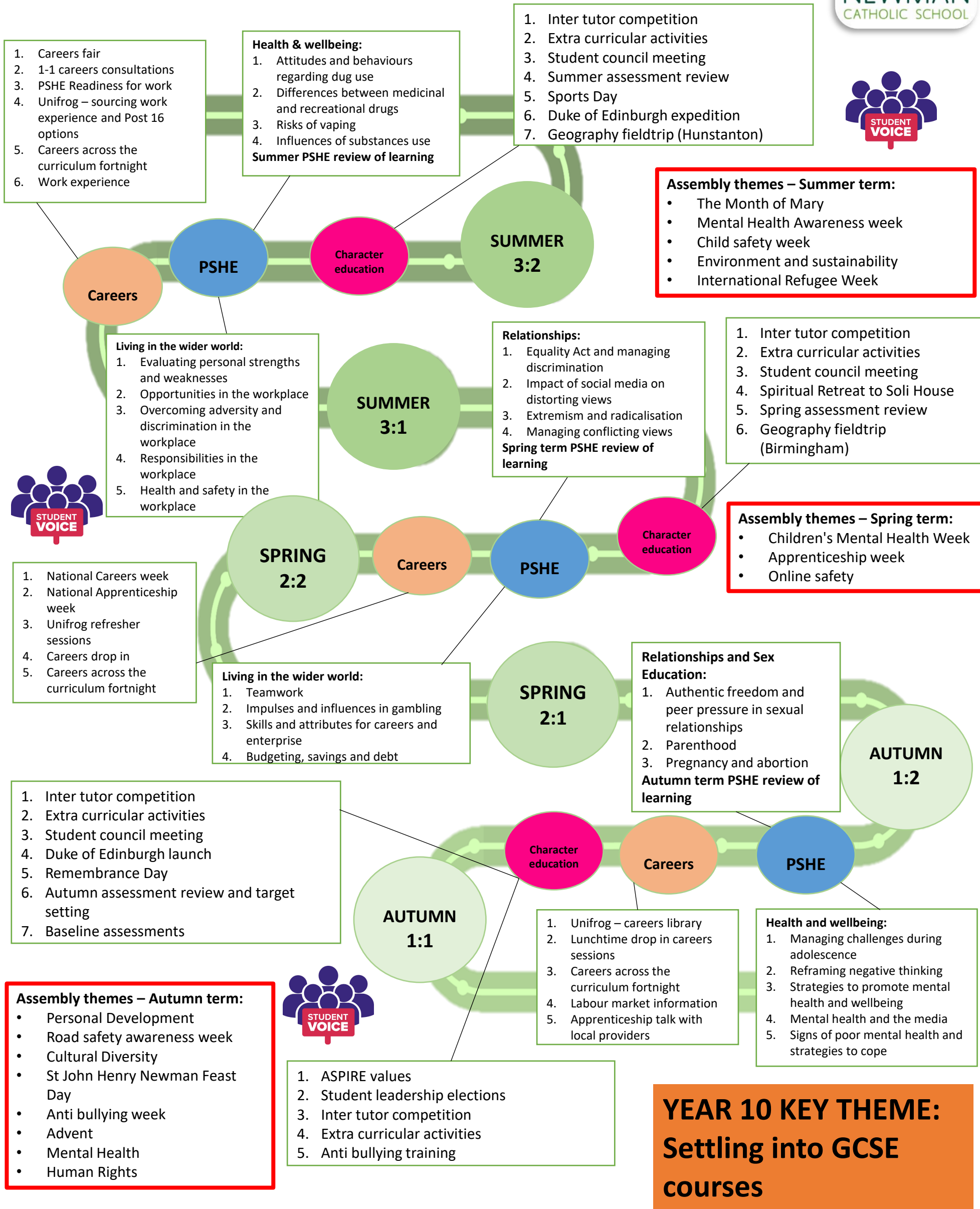
British Values include:

- *Democracy*
- *Rule of Law*
- *Individual liberty*
- *Mutual Respect & Tolerance*

SMSC includes:

Spiritual, Moral, Cultural, Social Education

PERSONAL DEVELOPMENT: YEAR 10



**YEAR 10 KEY THEME:
Settling into GCSE courses**