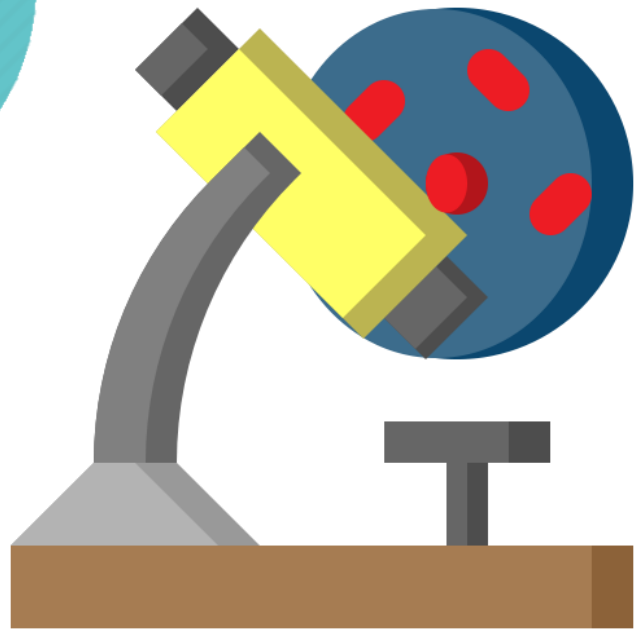


Cardinal Newman Catholic School

Holy Cross Catholic Multi Academy Company

YEAR 10

MADE FOR GREATNESS



Mock Examination Booklet

Name:

“Knowledge through the light of faith”



CARDINAL
NEWMAN
CATHOLIC SCHOOL

Assessment Letter

September 2022

Dear Parent/Carer

Re: Mock Examinations – Aim High, Reach for the Sky, No Limits!

We hope that you and your family are well at this time.

To support Year 10 in continuing to prepare for their GCSE English Language and GCSE Biology examinations at the end of this academic year, students will be participating in another mock examination.

Mock examinations are an important part of Year 10 as they help to identify student progress and understanding, identifying gaps for future learning as well as providing students with further examination experience ahead of their summer examinations.

Students will complete 1 examination paper for Biology which will be 1 hour and 45 minutes and English Language will also be 1 hour and 45 minutes.

This booklet will support students in preparing for these mock exams and will outline the following:

- Topics covered in the assessments
- Which sections should be completed in the revision materials and workbooks
- How the books should be used
- What further revision can be completed

Please use this booklet and the revision materials provided on Class Charts and in lessons to prepare for these exams. Keep them safe as this is a valuable resource. It will also be sent electronically to all students.

We recognise that sometimes the assessment season can cause some students to feel anxious or stressed and will be providing students with off-timetable revision days with subject teachers as well as sessions with an external company called 'Positively you' to help them in developing revision strategies that work for them.

Please support your child in attending the Biology and English Language Period 6 sessions which are on Week B Thursday from 3.15pm – 4.15pm for English Language and Week A Wednesday from 3.15pm – 4.15pm for Biology. These sessions are crucial as we begin the 15-school week countdown to the examinations.

We want mock examinations to be a positive experience that supports and develops the skills and resilience in preparation for future examinations. If students are not successful in their mock examinations they will be selected to resit, after being provided with guidance on how to improve to ensure students have a positive experience. If you need any further support, guidance or information please do not hesitate in contacting us.

We would also like to take this opportunity to thank you for your continued support and a huge well done to all those students who have started so well in Year 10 and have continued to work hard and demonstrate that they are truly made for greatness.

Please do not hesitate to make contact if you have any further queries.

Yours faithfully

Ms H Oakman
Head of Year 10
Hannah.oakman@cncs.school

Ms E O'Connor
Headteacher
Emma.French@cncs.school

English & Science Qualification Overview

English (WJEC Eduqas)	Science (AQA Separate Sciences)
<p><u>GCSE English Language (Summer 2023 – end of Year 10)</u></p> <p>Paper 1 (1 hour, 45 minutes)</p> <p>a) 20th Century Literature Reading</p> <p>b) Creative Prose Writing</p> <p>Paper 2 (2 hours)</p> <p>a) 19th and 21st Century Non-Fiction Reading</p> <p>b) Transactional/Persuasive Writing</p>	<p><u>GCSE Biology (Summer 2023 – end of Year 10)</u></p> <p>Paper 1 (1 hour, 45 minutes)</p> <p>a) B1 Cell Biology</p> <p>b) B2 Organisation</p> <p>c) B3 Infection & response</p> <p>d) B4 Bioenergetics</p> <p>Paper 2 (1 hour, 45 minutes)</p> <p>a) B5 Homeostasis</p> <p>b) B6 Inheritance and Selection</p> <p>c) B7 Ecology</p>
<p><u>GCSE English Literature (Summer 2024 – end of Year 11)</u></p> <p>Paper 1 (2 hours)</p> <p>a) Shakespeare (Macbeth)</p> <p>b) Poetry Anthology</p> <p>Paper 2 (2 hours, 30 minutes)</p> <p>a) Post 1914 Drama (An Inspector Calls)</p> <p>b) 19th Century Prose (A Christmas Carol)</p> <p>c) Unseen Poetry</p>	<p><u>GCSE Chemistry (Summer 2024 – end of Year 11)</u></p> <p>Paper 1 (1 hour, 45 minutes)</p> <p>a) C1 Atomic Structure</p> <p>b) C2 Bonding</p> <p>c) C3 Quantitative Chemistry</p> <p>d) C4 Chemical Changes</p> <p>e) C5 Energy Changes</p> <p>Paper 2 (1 hour, 45 minutes)</p> <p>a) C6 Rates of Reaction</p> <p>b) C7 Organic Chemistry</p> <p>c) C8 Chemical Analysis</p> <p>d) C9 Chemistry of the Atmosphere</p> <p>e) C10 Using Resources</p>
	<p><u>GCSE Physics (Summer 2024 – end of Year 11)</u></p> <p>Paper 1 (1 hour, 45 minutes)</p> <p>a) P1 Energy</p> <p>b) P2 Electricity</p> <p>c) P3 Particle model of matter</p> <p>d) P4 Atomic structure</p> <p>Paper 2 (1 hour, 45 minutes)</p> <p>a) P5 Forces</p> <p>b) P6 waves</p> <p>c) P7 Magnets & Electromagnets</p> <p>d) P8 Space Physics</p>

Assessment Timetable

Subject	Date & AM/PM	Topics Covered	Equipment Needed	Venue & Seat Number
GCSE English Language	Tuesday 14th February 2023 (AM)			
GCSE Biology	Friday 17th February 2023 (PM)			

Exam Regulations

- You should **not attempt to communicate with any other students**. This includes turning around and look at other students once seated. Examination conditions remain until you had left the exam room.
- All electronic devices** should be **switched off and placed in your bag** before you enter the room
- Do not bring** any **pieces of paper** in your pockets.
- Labels must be removed from water bottles** before entering the room.
- Any **watches** must be taken off and **are not allowed in the exam room**.
- You must be in **full school uniform**. Any student without the correct uniform will not be allowed into the examination hall.

Exam Season Timings

AM - Line Up 8.40am

PM - Line Up 1:10pm

Tuesdays only

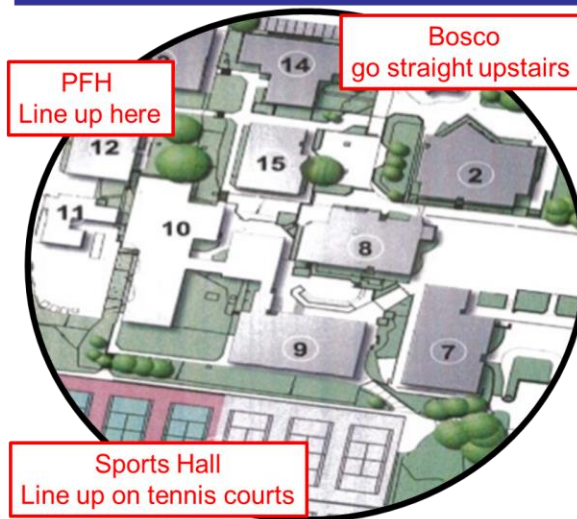
PM - Line Up 12:40pm

Examinations

Where are the Exams?

Sports Hall	Most examinations take place in the Sports Hall
PFH	Students who receive extra time or need a smaller environment
Exam Access	Upstairs Bosco classrooms

Where do we line up?



Line up in the correct row in seat order (normally alphabetical)

Wait in silence so that you can hear instructions.

When instructed you will be guided into the assessment venue

There should be no talking once you have entered the venue.

Move to your seat when instructed and remain there for further instructions.

What do we do with our bags?



Please take your bag and coat and place in the entrance to the sports hall

Those in the PFH will put their bags into the sports cupboard

Bosco student will be instructed when they arrive.

Assessment Booklet

GCSE English Language

What am I being assessed on?

In your mock, you will complete a Component 1 mock exam which will test your AO1 – AO6 skills.

Section A: 20th Century Fiction Reading (1 hour)

Section B: Narrative Writing (45 minutes)

What revision material should I revise from?

You should revise:

- Word types (nouns, verbs, adverbs, adjectives)
- Sentence forms (simple, compound, complex)
- Sentence types (declarative, exclamative, interrogative, imperative)
- Figurative language (simile, metaphor, personification, alliteration, onomatopoeia, pathetic fallacy)
- Features of fictional texts (plot, characters, themes, progression, tone, atmosphere, tension)

How can I revise?

- **Quizzing:** create a mini text or quiz on a topic (e.g. AOs/ terminology) with a friend and swap
- **Graphic organisers:** are a handy vehicle to get students reconstructing their revision topics, making meaningful links and connections
- **Example Questions:** test yourself on the skills by practicing example questions
- **Mindmaps:** A mind map is a diagram used to visually organize information. A mind map is hierarchical and shows relationships among pieces of the whole.
- **Flashcards:** to write keywords or notes on cards and test yourself on the meaning
- **Seneca:** recapping the skills needed for AO1 and AO2
- **Educake:** recapping the skills needed for AO1-6

Assessment Booklet

GCSE English Language

Additional Revision Tasks & Resources

You will be given a Component 1 Revision Guide by your teacher.

They will assign tasks for you to complete in the lead up to your mock exam.



English Language Component 1

20th Century Literature
Reading and Narrative
Writing

Revision Guide

Name.....

Class/Teacher.....

You can also use Educake to complete practice questions.



Tips for Success:

- Read the text twice and highlight key quotations as you read the second time
- In Q1 you do not need to write in full sentences
- Try to include 6 quotations or more in 10 mark questions
- Plan your narrative before you writing using the structure advised
- Check your SPAG once you've finished your story

Assessment Booklet

GCSE Biology

What am I being assessed on?



GCSE
BIOLOGY

Paper 1

What's assessed

Topics 1–4: Cell biology; Organisation; Infection and response; and Bioenergetics.

How it's assessed

- Written exam: 1 hour 45 minutes
- Foundation and Higher Tier
- 100 marks
- 50 % of GCSE

Questions

Multiple choice, structured, closed short answer and open response.

What revision material should I revise from?

- Use your **CGP revision guide** pages 16-115.
- Use your **Biology paper 1 homework booklet** that you have just completed. This can act as another revision guide for you.
- Use the notes and exam question practice in your **Biology exercise book**.
- Use your **previous assessments**, to learn from mistakes.
- **BBC bitesize** <https://www.bbc.co.uk/bitesize/examspecs/zpgcbk7>

How can I revise?

- Make mind maps of the topics coming up in your assessment using your revision guide or BBC Bitesize.
- Annotate the learning journeys for each topic in your exercise book.
- Make revision cards with information on one side and questions on the back to test yourself (these become mini quizzes).
- Complete quizzes on BBC Bitesize, Educake etc.
- Complete practice exam questions in the back of your revision guide pages 238-259. Or find them on Maths and Physics tutor: <https://www.physicsandmathstutor.com/biology-revision/gcse-aqa/>

Assessment Booklet

GCSE Biology

Additional Resources (click the bubble for the links):

You can watch videos
on
freesciencelessons.com



<https://www.freesciencelessons.co.uk/gcse-biology-paper-1/cell-biology/>

freesciencelessons

You can watch a
'whole of biology
paper 1' video on
primrosekitten



<https://www.youtube.com/watch?v=mKYQ-K23Mr4>

You can use
Maths&Physics tutor
to find revision
resources



<https://www.physicsandmathstutor.com/biology-revision/gcse-aqa/>

You can use Educake
to complete practice
questions.



Tips for Success:

- When completing exam questions in Biology, **apply CUPS**:
C = Circle the command word (describe, state, explain etc).
U = Underline the key information or data
P = Check out how many points/marks the question is worth
S = Simplify the question to make it easy to answer
- Set aside time for **revision at home** (just like your **timetable** at school) otherwise you will always put it off until tomorrow... try little and often... start with watching a few videos. Start with topic 1 Cell biology.